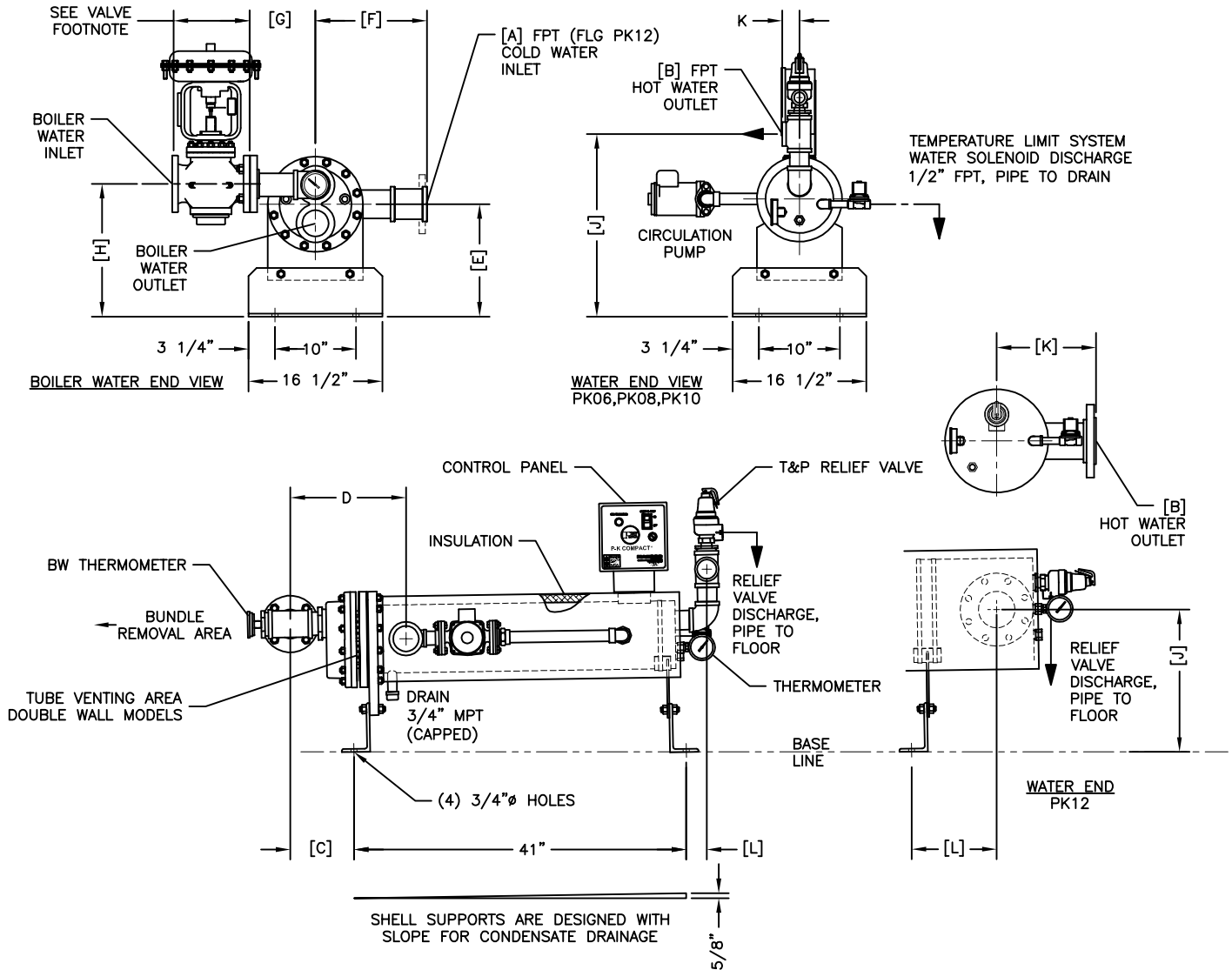


# P-K Compact®

HORIZONTAL / WATER TO WATER CONFIGURATION



Model	A	B	C	D	E	F	G	H	J	K	L
PK06H	2"	1 1/2"	7 3/4"	13 1/2"	14"	12"	8"	15 3/4"	22"	2 3/4"	4 1/2"
PK08H	3"	2"	8 1/4"	14 3/4"	14"	13 3/4"	8 3/4"	16 1/2"	22 1/2"	3 1/8"	4"
PK10H	3"	2 1/2"	10 3/4"	17 1/2"	15"	14 3/4"	12"	18"	24 3/4"	3 1/8"	4 1/2"
PK12H	5"-150#FLG	4"-150#FLG	12 1/2"	20"	17"	18"	11 1/4"	20 1/4"	17 5/8"	12 1/4"	17 1/4"

Component	Materials of Construction	
Shell Side	SB-171-C706 Copper Nickel	
Tube Side	Tubes	SB75-C122 Copper or SB111-C706 Copper Nickel
	Tubesheet (inner)	SB-171-C464 Naval Brass
	Tubesheet (outer)	SA-516-GR70 Carbon Steel (Double wall only)
	Bonnet or Billet	SA-278-Class 30 Cast Iron or SA-516-GR70 Carbon Steel

Customer:

Job Name:

Boiler Water Rate:  GPM @  °F (Inlet)  °F (Outlet)

Domestic Water Recovery:  GPM @  °F (Inlet)  °F (Outlet)

**Notes:**

1. Dimensions are approximate and for rough in use only.
2. Valve dimensions vary with size and type of valve required. Allow for 16" maximum length.
3. A pneumatic valve is shown. Self contained and electric valves are also available.
4. This information is subject to change without notice.

**HARSCO**  
INDUSTRIAL  
Patterson-Kelley