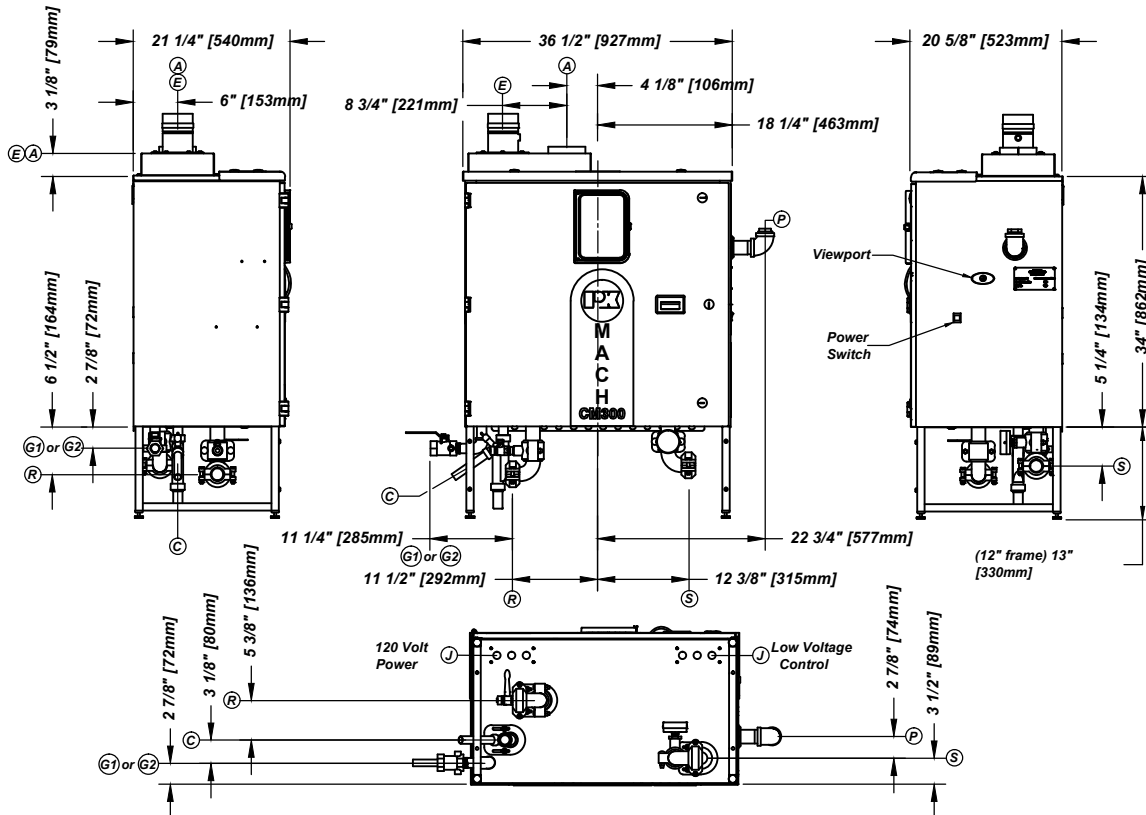


Rep Name _____
 Phone Number _____
 Email _____
 Date _____

P-K MACH® Model CM-300

Natural Gas or Liquid Propane with NURO® Control



This MACH Boiler requires Category IV venting (condensing—positive pressure) or Category II venting* (condensing—negative pressure) as defined in ANSI Z223.1/NFPA 54/CSA -B.149 Latest Edition

*Category II Venting must include optional combustion air damper

BOILER CONNECTIONS:	
(A) Combustion Air Inlet	5" dia stub
(C) Condensate Drain	3/4" hose
(E) Exhaust Vent	4"
(G1) Liquid Propane Gas Connection	1" NPT-F
(G2) Natural Gas Connection	1" NPT-F
(J) Wiring Junction Boxes	inside cabinet
(P) Pressure Relief Valve	see list for selection
(R) Boiler Water Return, Victaulic® clamp	1 1/2" pipe, grooved
(S) Boiler Water Supply, Victaulic® clamp	1 1/2" pipe, grooved

Victaulic is a registered trademark of Victaulic Company, Easton, PA, USA

BOILER CONTROLS: ASME CSD-1 is standard.	
Complies with GE GAP (IRI) guidelines GAP.4.1.0 and GAP.4.1.3.	
Complies with FM Global 6-4 Section 1.0	
Main Gas Train with Dual Shut-Off	
Integrated Boiler Control, NURO® Series	
Operating Thermostat, 42°–195°F (5.6°–91°C)	
High Limit Thermostat, Manual Reset, 100–197°F (38°–92°C)	
High Exhaust Pressure Switch	
LWCO, Probe Type, Manual Reset	
Combustion Air Proving Switch, Differential Pressure Type	
Combustion Blower, Variable Speed, 300 Watt	

A.S.M.E. Section IV Design Data	
Maximum Pressure	80 psig
Maximum Allowable Temperature	250°F
Maximum Operating Temperature	194°F
Heated Wet Surface Area:	12.29 sq.ft.
Flow rate @ 20°F ΔT	28 GPM
Flow rate @ 40°F ΔT	14 GPM

MODEL SELECTION	CM-300	
	○ Natural Gas	○ Liquid Propane
Min Inlet Gas Pressure	3.5" w.c.	7.0" w.c.
Max Inlet Gas Pressure	14" w.c.	
Input, BTU/hr	300,000	
Output, BTU/hr	279,000	
Boiler HP:	8.3	
Operating Weight	290 lbs.*	
Water Content	1.2 gallons	
Shipping Dimensions	58"x38"x63" (LxWxH)	
Estimated Shipping Weight	420 lbs.*	
Power Supply	120V, 1ph, 60Hz	
Operating Current	< 5 Amps	
Recommended Minimum Circuit Capacity	10 Amps	

Pressure Relief Valve/Press-Temp Gauge		
Shipped Loose for Field Installation		
○ 30 PSIG	3/4" x 1"	0–100psi/30–240°F
○ 50 PSIG	3/4" x 1"	0–100psi/30–240°F
○ 60 PSIG	3/4" x 1"	0–100psi/30–240°F
○ 75 PSIG	3/4" x 1"	0–240psi/30–240°F
○ 80 PSIG	3/4" x 1"	0–240psi/30–240°F

Recommended Clearance for Service Access			
Front – 30"	Rear – 0"	Top – 24"	Left Side – 2"
			Right Side – 24"

HARSCO
 INDUSTRIAL
 Patterson-Kelley